

# Expand your business with the OFTEC renewables scheme



The renewable heating industries have been around for some time but the next few years looks set to be their best period yet with the introduction of the Renewable Heat Incentive (RHI). Now is the time for installers to look at the renewable market and, in particular, the future of hybrid heating systems, combining oil with solar thermal and/or air source heat pumps or installing a biomass system.



## What is the RHI?

The RHI is a government financial support scheme and will provide incentives for consumers with installations of renewable technologies which generate heat. The domestic RHI launched in 2014 and will see incentives paid over a seven-year period to consumers. Applicable technologies must be less than or equal to 45kW in size and have a 45kW or less microgeneration (MCS) certification.

The RHI rates are subject to change, for the current rates go to [www.ofgem.gov.uk](http://www.ofgem.gov.uk)

## OFTEC renewables scheme

OFTEC registration services has developed a class of registration for solar thermal (OFT 501), heat pumps (OFT 504) and biomass (OFT15-505) and can offer installation businesses the opportunity to join our competent person and microgeneration scheme. Our competent person scheme will enable you to self-certify renewable technologies in accordance with Building Regulations in England, Wales, Isle of Man and the Channel Islands. In addition OFT 501, 504 and OFT15-505 registration will also give you the option to obtain MCS certification so your customers are eligible for RHI payments.

To join, request an application form by calling our registration team on Tel 01473 626 298 (UK), 01 8645 771 (RoI), or emailing [registration@oftec.org](mailto:registration@oftec.org) or by visiting our website [www.joinoftec.com](http://www.joinoftec.com). Upon receipt of your application form OFTEC inspection services will carry

out an initial evaluation on your business for self-certification of Building Regulations and to the MCS scheme requirements.

## Qualifications

The pre-requisite for access to renewable registration is for a technician to hold an independent qualification for the area of work that has been mapped to the Qualifications and Credit Framework (QCF) units.

For heat pumps these will be courses mapped to QCF units D/602/3072, F/602/3078, L/602/3083 and Y/602/3054.

For solar thermal these will be course mapped to QCF units F/602/3100, L/602/3102, Y/602/3104 and K/602/3107.

For biomass courses these need to be mapped to QCF units J/502/9406, L/502/9407, R/502/9411, K/502/9415, Y/502/9412 and H/502/9414.

*Course requirements current at the time of print but may be subject to change. Check with OFTEC training department or the MCS website [www.microgenerationcertification.org](http://www.microgenerationcertification.org)*

As an alternative you can apply via the 'experienced worker route' providing you have demonstrable experience and manufacturers training. For further information please see MCS scheme document MCS 025 Installer Certification Scheme Competency Criteria Guidance available off the MCS website or contact OFTEC registration services.



## Route to certification

The certification process is relatively simple. Complete and submit the OFTEC R572 Renewable Registration Scheme application form (available from our website [www.oftec.org](http://www.oftec.org) or by contacting registration services Tel 01473 626 298 (UK), 01 8645 771 (RoI) or email [registration@oftec.org](mailto:registration@oftec.org)). Once reviewed and accepted as eligible you will be put forward for an audit to evaluate your business to the requirements of the registration scheme. For further details of the evaluation process please see the following section. Once your evaluation report is verified, and any gaps in procedures and competency are satisfactorily addressed, you will be awarded certification. Registration documents, logos and identification cards for renewable technology technicians will be supplied and your details included on the Microgeneration scheme register.

## Evaluation

The initial evaluation of your business for renewable technologies will be audited to the requirements for the Department of Communities and Local Government's (DCLG) competent person scheme conditions, the minimum technical competences (MTC) and also the Department of Energy and Climate Change (DECC) microgeneration (MCS) scheme requirements. The MCS scheme requirements are set out in the following standards available to download from [www.microgenerationcertification.org/mcs-standards/installer-standards](http://www.microgenerationcertification.org/mcs-standards/installer-standards)

The following MCS standards will apply for the OFTEC renewable scheme.

Installer Certification Scheme Requirements (MCS 001) then: MCS Standard MIS 3001 for OFT 501 – solar thermal systems *and/or*

MCS Standard MIS 3005 for OFT 504 – heat pump systems *and/or*  
MCS Standard MIS 3004 for OFT15-505 – biomass

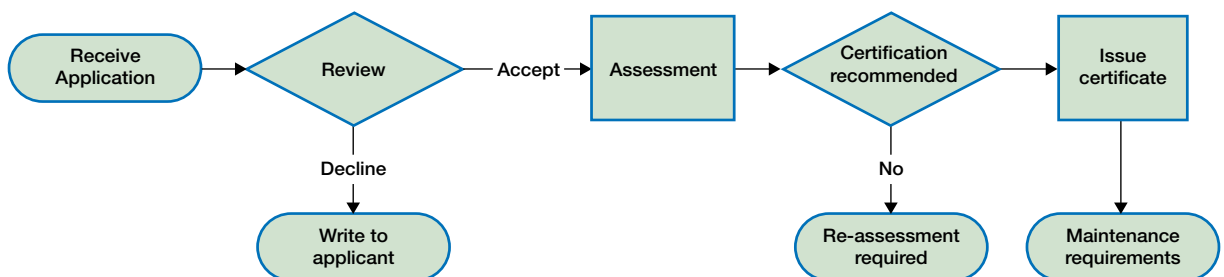
The evaluation will start with our technical auditor and your company nominee looking at your business's quality management systems, records of internal reviews and any actions or outcomes. Then we will look at contracts and methods of design, installation, set to work, commissioning and handover procedures adopted by your business. All systems must be designed in accordance with the requirements set out in the aforementioned Microgeneration Standards. The OFTEC technical auditor will then have to see an installation recently undertaken on the renewable technology being applied for. If this is solar thermal and heat pumps then this will more than likely be at separate sites but hopefully within a reasonable distance from your base. Please discuss the on-site inspection requirements with your technical auditor upon booking. We may be able to accept an installation not fully within scope of the MCS scheme for the on-site inspection if it provides objective assessment evidence against the specific requirements of the Microgeneration Installation Standards.

Following your evaluation your technical auditor will provide you with verbal feedback at the closing meeting and this will give you some indication of how your application is progressing.

Full verification of your evaluation will be conducted by OFTEC head office and you will receive confirmation in writing of acceptance onto the scheme or notification of any non-conformities that need to be addressed before certification registration is granted.

The next few years will see a significant expansion of the renewable market and there is no better time to join up to install technologies that compliment your existing oil heating business. Contact OFTEC today.

## Route to registration



For more information please do not hesitate to contact our registration services department at:

OFTEC, Foxwood House, Dobbs Lane, Kesgrave, Ipswich IP5 2QQ  
t: 01473 626 298 (UK) or 01 8645 771 (Republic of Ireland)  
e: [registration@oftec.org](mailto:registration@oftec.org) w: [www.joinoftec.com](http://www.joinoftec.com)